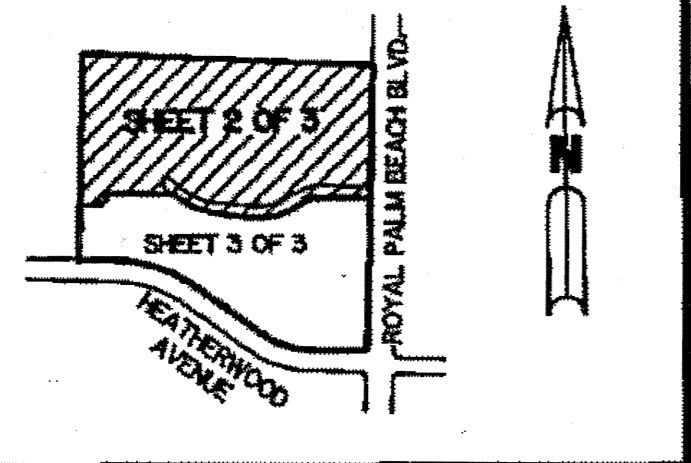


( A P.U.D. )

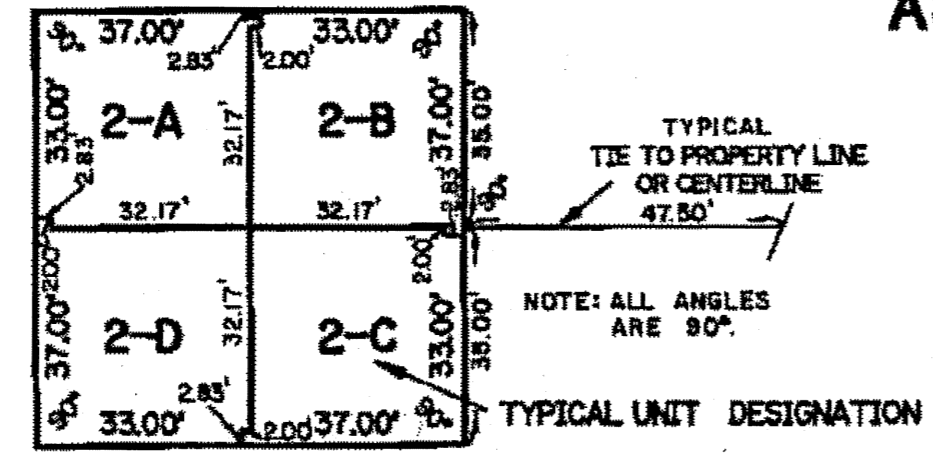
# STAMFORD AT ROYAL PALM BEACH

A REPLAT OF A PORTION OF TRACT "F" ACCORDING TO THE PLAT OF HAWTHORN II AS RECORDED IN PLAT BOOK 31, PAGES 26 THROUGH 35 INCLUSIVE, OF THE PUBLIC RECORDS OF PALM BEACH COUNTY, FLORIDA. SECTION 23, TOWNSHIP 43 SOUTH, RANGE 41 EAST

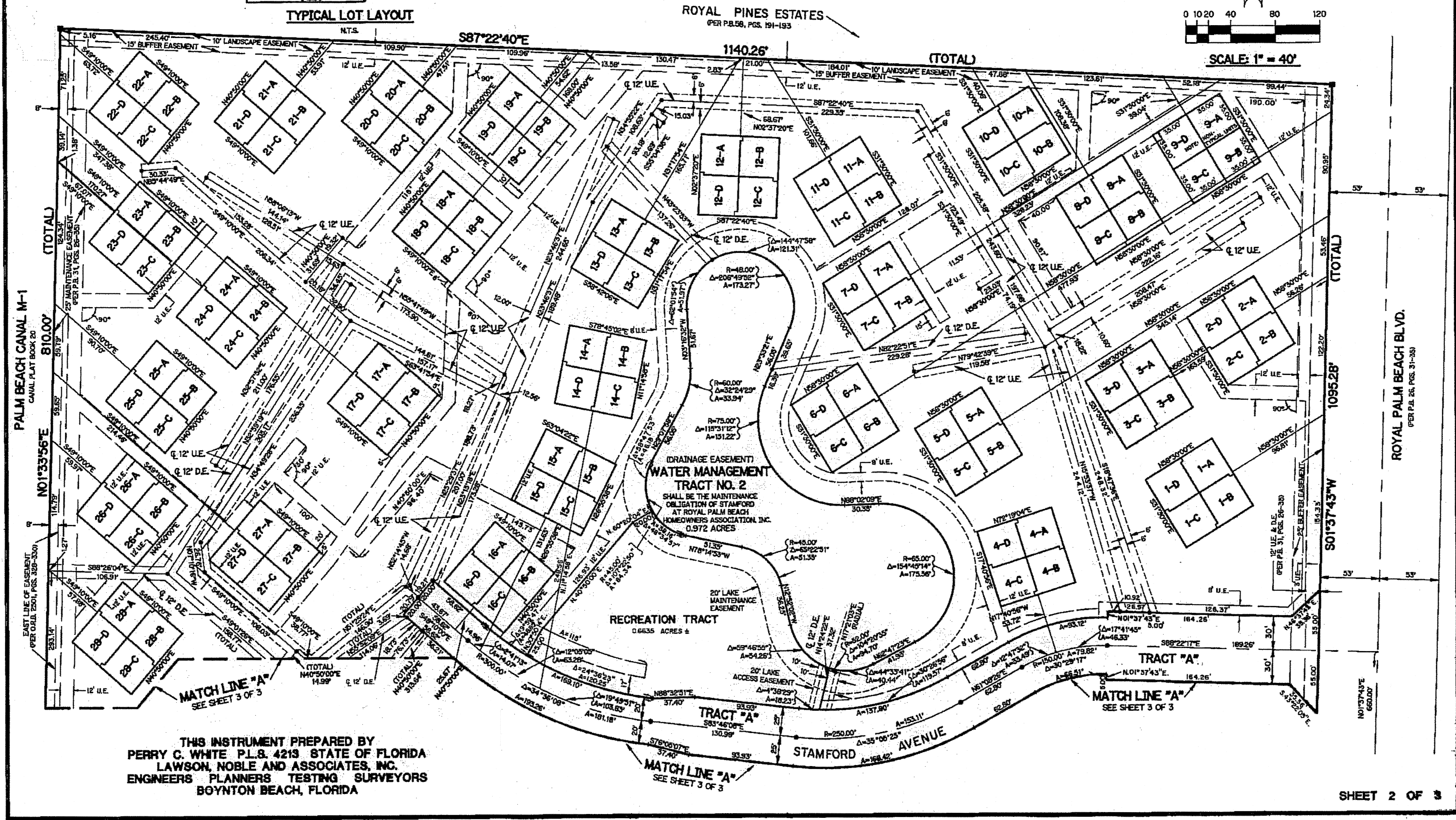
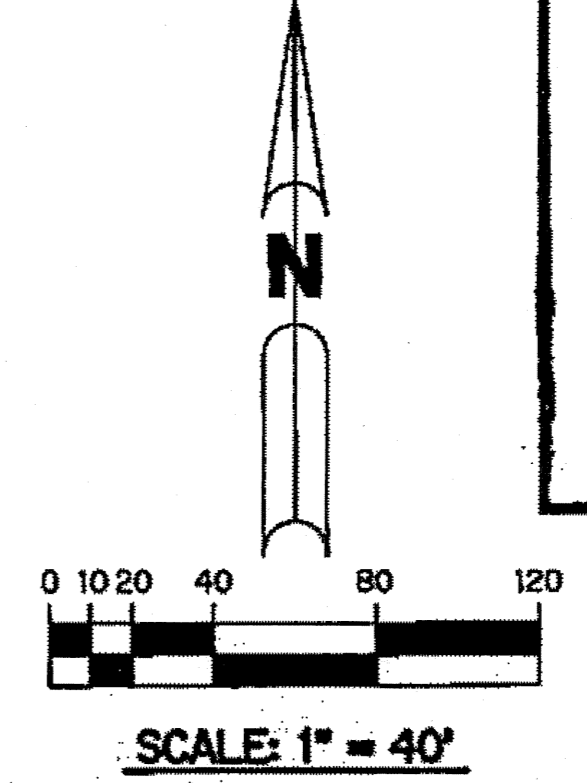
SHEET 2 OF 3 JANUARY, 1988



KEY MAP N.T.S.



TYPICAL LOT LAYOUT N.T.S.



THIS INSTRUMENT PREPARED BY PERRY C. WHITE P.L.B. 4213 STATE OF FLORIDA LAWSON, NOBLE AND ASSOCIATES, INC. ENGINEERS PLANNERS TESTING SURVEYORS BOYNTON BEACH, FLORIDA